



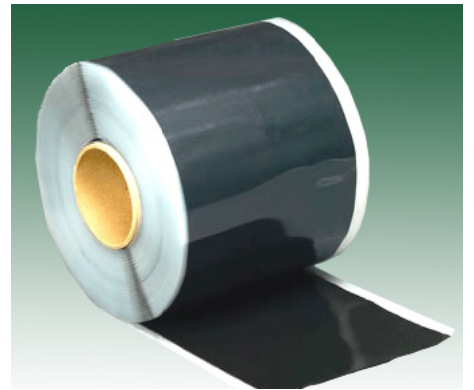
PRODUCTS FOR OUR ENVIRONMENT

TECHNICAL DATA SHEET

ERS-7000 Splice Tape 3" x 100'

P/N: 035-0040

For Professional Use Only



PRODUCT DESCRIPTION:

ERS-7000 Splice Tape is a black, butyl rubber-based adhesive in tape form. The product has been formulated to provide high green strength in both shear and peel. ERS-7000 Splice Tape has a clear, durable poly release film.

RECOMMENDED USES:

ERS-7000 Splice Tape was specifically developed for splicing sheets of ERS-7000 membrane together. The ERS-7000 Splice Tape may be used on Ballasted, Mechanically Attached, and Fully Adhered EPDM Roofing Systems.

ADVANTAGES:

- Contains no solvent
- Ease of installation
- Labor savings up to 50%
- Reduces application problems of adhesives
- Superior tack and green strength
- Strength improves with age
- Superior peel and shear strengths

INSTALLATION:

Application:

After the ERS-7000 has been positioned, fold back the top sheet approximately 12". Using Scotch-Brite® scrub pads or clean rags, clean the seam area thoroughly with Ecology's ERS-7000 Splice Primer. Unroll the seam tape onto the seaming area on the bottom sheet, leaving the release paper on. Using firm hand pressure, smooth the tape into place along the length of the seam. Remove the release liner by pulling at a 90° angle. The tape should be positioned so that the tape protrudes from the seam 1/8" to 3/8". As the release liner is being removed, roll the top sheet onto the seam and apply firm hand pressure, then use a 2" steel hand roller and roll the seam starting from the inside of the sheet working outward over the edge of the sheet perpendicular to the direction of the seam. Lap Sealant is required along the seam where the tape is overlapped in the seam (approximately 1.5" in each direction past the overlap).

In warm, sunny weather, the tapes should be stored in the boxes in a shaded area until just prior to use. Prolonged storage temperatures in excess of 90°F (32°C) may affect the product's shelf life. Storage and use of tapes at temperatures below 40°F (4°C) will result in loss of tape tack, and may in extreme cases, result in a loss of bond to the ERS-7000. Tapes should be maintained at a minimum temperature of 60°F (15°C) until just prior to installation. Hot boxes may be required for job site storage.

STORAGE LIFE:

ERS-7000 Splice Tape is a cured product and will not degrade in normal warehouse storage. However, in time the release paper may become difficult to remove. For this reason Ecology Roof Systems recommends the shelf life not exceed 12 months. Stock should be rotated.

PRECAUTIONS:

ERS-7000 Splice Tape contains ingredients that could be harmful if mishandled. Contact with skin and eyes should be avoided and necessary protective equipment and clothing should be worn. Ecology Roof Systems maintains Material Safety Data Sheets on all of its products. Material Safety Data Sheets contain health and safety information for your development of appropriate product handling procedures to protect your employees and customers. Ecology Roof Systems Material Safety Data Sheets should be read and understood by all of your supervisory personnel and employees before using Mule-Hide products in your facilities.

PHYSICAL PROPERTIES:

Base Polymer:	Butyl
Color:	Black
Cure State:	Cured
Tensile Strength:	75 psi (55 psi min.)
Elongation:	1000% (800% min.)
Brittleness Temperature:	Below -50°F
Permeability:	0.6 perm-mils
Heat Aging at 300°F:	No appearance change after 180 hours

Typical Values: Based on material tested in our laboratories but variable from sample to sample. Typical values should not be construed as a guaranteed analysis of any specific lot or as specification items.

Typical Performance of EPDM Splice Tape

	Test Temperature, °F		
	15°	70°	158°
Peel, pli	12 - 16	8 - 10	6 - 8
Shear, psi	45 - 55	35 - 45	22 - 27

Ecology Roof Systems[®]

Corporate Offices

9821 Olde Eight Road, Unit F, Northfield, OH 44067

PHONE: 330-467-4220 FAX: 330-467-4225

www.ecologyroof.com

REGIONAL OFFICES LOCATED ACROSS THE U.S.

To the best of our knowledge, all technical data contained herein is true and accurate as of the date of issuance and subject to change without prior notice. User must contact Ecology Roof Systems to verify correctness before specifying or ordering. We guarantee our products to conform to the quality control standards established by Ecology Roof Systems. We assume no responsibility for coverage, performance or injuries resulting from use. Liability, if any is limited to replacement of the product. NO OTHER WARRANTY OR GUARANTEE OF ANY KIND IS MADE BY ECOLOGY ROOF SYSTEMS, EXPRESSED OR IMPLIED, STATUTORY, BY OPERATION OF LAW, OR OTHERWISE, INCLUDING MERCHANTABILITY AND FITNESS FOR A PARTICULAR PURPOSE.